



TECHNOTE – SeaChange VDCP Control Driver

INTRODUCTION

This document describes the connection and setup required for Fastrack to control the SeaChange Video Server with Louth VDCP protocol.

For additional information on Fastrack operations, consult the Fastrack Operations Manual.
For additional information on SeaChange Server operations, consult the SeaChange Operations Manual.

- Fastrack software Version 4.1R02 or later required.
- This interface was tested with SeaChange software version 3.0.033. Proper operations cannot be guaranteed with earlier versions of software.

CONNECTION

For a new system, when cabling up the various components of SeaChange, be sure to connect BOTH Ethernet cables from the MCL and BML to the switch.

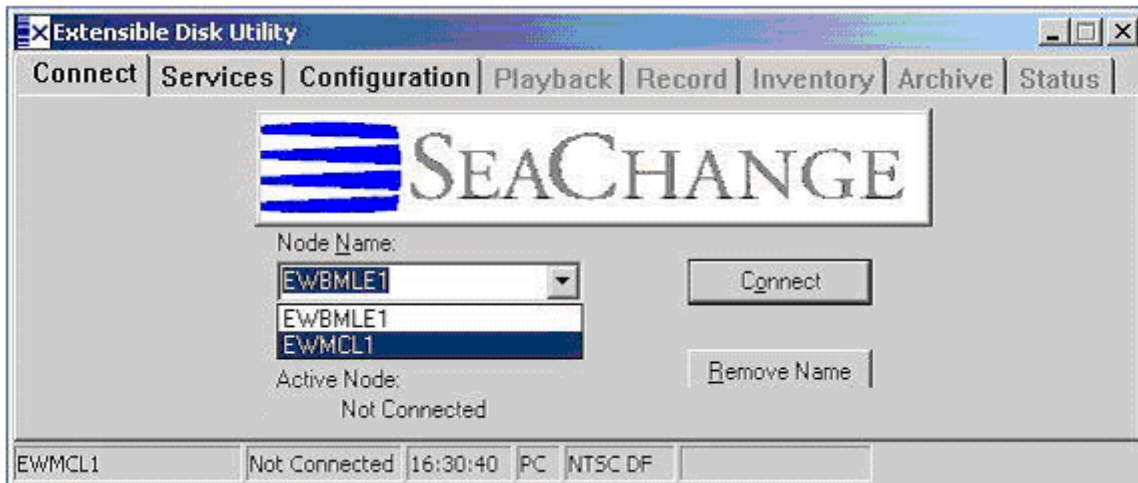
A special cable is required to connect the Fastrack I/O ports to the SeaChange ports.

FASTRACK	SEACHANGE
(Rx -) 2	(Tx -) 7
(Rx+) 7	(Tx+) 2
(Tx+) 3	(Rx+) 4
(Tx -) 8	(Rx -) 8

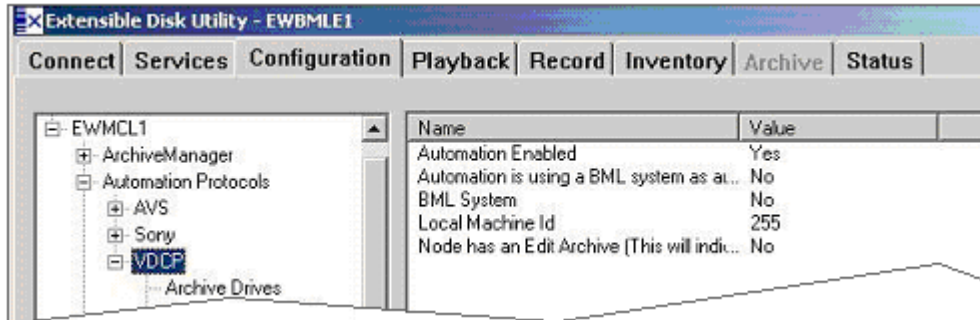
SEACHANGE SETUP

1. Double click the **ExdUtil** icon on the SeaChange PC window and connect to either Service.

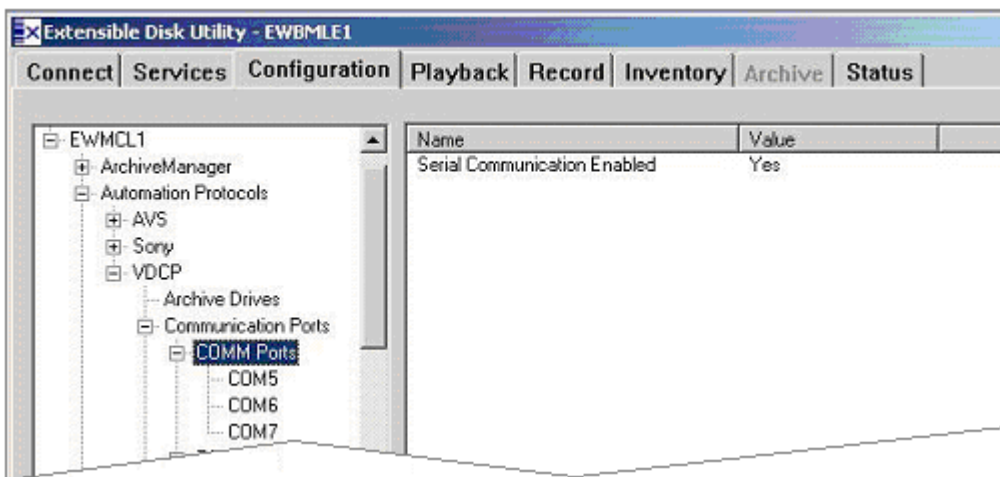




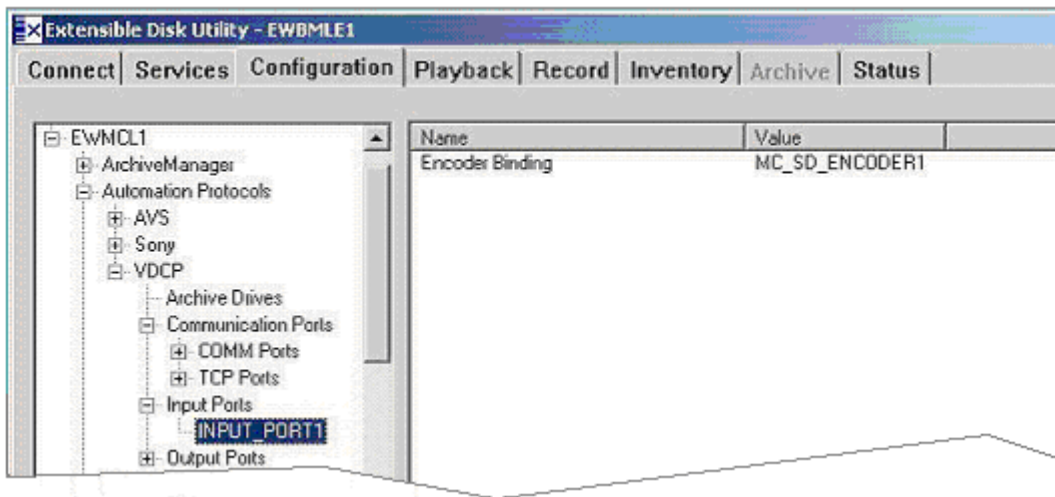
2. Select the MCL and the Configuration Tab and enable the **VDCP Automation** Protocol.



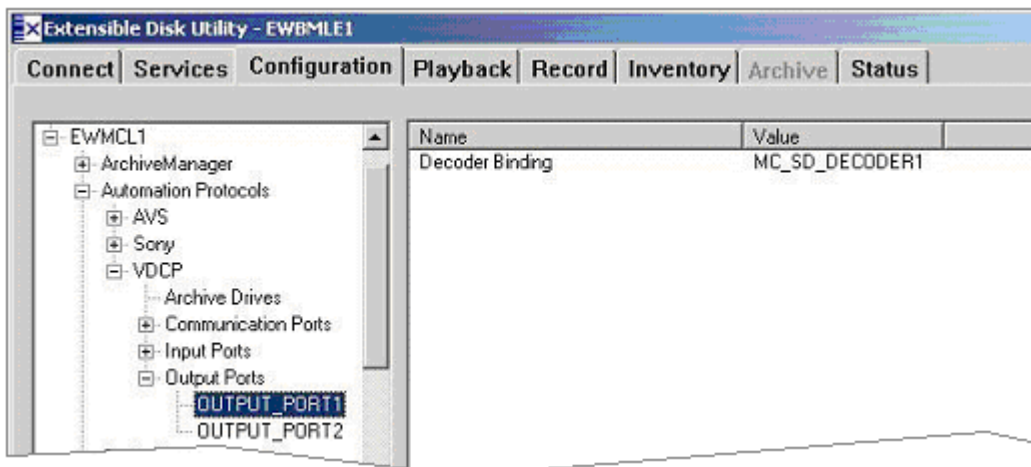
3. Select the VDCP **Communication Ports** that are to be used. (Ex: COM5, COM6, COM7) and enable **Serial Communication**.



4. Select the VDCP **Input Ports and Encoder Binding**.

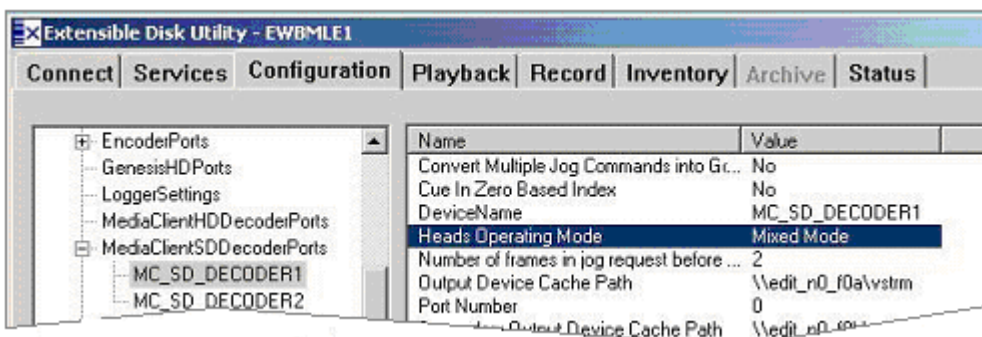


5. Select the VDCP **Output ports and Decoder Bindings**.

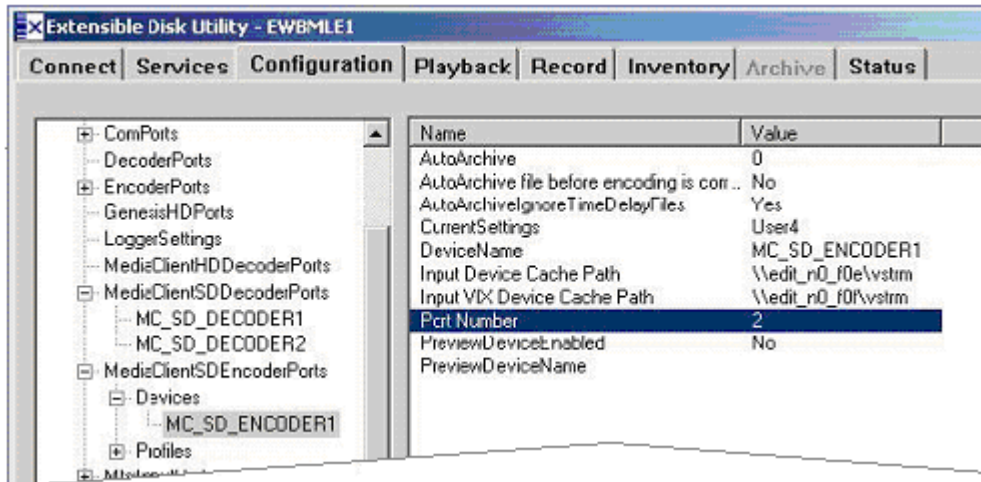


6. Select the **MediaClientSDDecoderPorts** and set the Heads Operating Mode to **Mixed Mode**.

If you can Play and Stop clips, but not shuttle them, then this item is probably set wrong.



- Finally, set the port for the **MediaClientSDEncoderPorts**.



FASTRACK SETUP

- On Fastrack, press **[SHIFT][ASGN]** and assign the ports using **Class = VDCP_D** and **Device = Seachange**.

For ports that are Decoders (Players), the Device Name must contain the digit corresponding to the VDCP port to be controlled. In the example below, **SChange1**.

For ports that are Encoders (Recorders), the Device Name must contain the digit corresponding to the VDCP port to be controlled preceded by a minus (-). In the example below, **SChange Rec-1**.

Track	On	Device Name	Class	Device	Auto	Port	Pool	V-Switcher	
								Video	Sta
1	<input checked="" type="checkbox"/>	SChange Rec-1	VDCP_D	SeaChange	<input type="checkbox"/>	P1	dd	1	
2	<input checked="" type="checkbox"/>	SChange1	VDCP_D	SeaChange	<input type="checkbox"/>	P2	dd	2	
3	<input checked="" type="checkbox"/>	SChange2	VDCP_D	SeaChange	<input type="checkbox"/>	P3	dd	3	
4	<input checked="" type="checkbox"/>	Deko	CHARGEN	Deko	<input type="checkbox"/>	none		5	

Note: If the SeaChange stops responding, first try rebooting the MCL.